

Features:

- Design Capacities of 2.95 to 224 GPH
- Discharge Pressures to 1,800 PSIG
- Metering Accuracy of $\pm 1\%$
- 10:1 Turndown via Stroke Length
- Internal Hydraulic Relief Valve
- Modular Design With Multiple Options
- Specifically Matched Accessories



| Performance Table | | | | |
|-------------------|-----------------|-------------|------------------|-------------------|
| Capacity (GPH) | Pressure (PSIG) | Speed (SPM) | Plunger Diameter | Connection (MNPT) |
| 2.95 | 1,800 | 29 | 5/8" | 3/8" |
| 5.90 | | 58 | | |
| 9.90 | | 97 | | |
| 11.9 | | 117 | | |
| 14.3 | | 140 | | |
| 19.5 | | 191 | | |
| 4.25 | 1,000 | 29 | 3/4" | 3/8" |
| 8.55 | | 58 | | |
| 14.3 | | 97 | | |
| 17.2 | | 117 | | |
| 20.6 | | 140 | | |
| 28.1 | | 191 | | |
| 7.60 | 360 | 29 | 1" | 3/8" |
| 15.2 | | 58 | | 1/2" |
| 25.4 | | 97 | | |
| 30.6 | | 117 | | |
| 36.7 | | 140 | | |
| 50.0 | | 191 | | |
| 11.8 | 210 | 29 | 1-1/4" | 3/8" |
| 23.7 | | 58 | | 1/2" |
| 39.7 | | 97 | | |
| 47.9 | | 117 | | |
| 57.3 | | 140 | | |
| 78.2 | | 191 | | |
| 17.1 | 195 | 29 | 1-1/2" | 3/8" |
| 34.2 | | 58 | | 1/2" |
| 57.2 | | 97 | | |
| 69.0 | | 117 | | |
| 82.5 | | 140 | | |
| 112 | | 191 | | |

Simplex capacities shown.
Double capacity for duplex pumps.

The NIKKISO Hydroflo® Series 2000 is a rugged, compact, hydraulically actuated diaphragm metering pump. The pump is available in simplex or duplex configuration, with independent capacity adjustment for each pumphead.

All drive parts are fully enclosed and operate in an oil bath which minimizes friction and wear while providing protection from harsh environments. A self-compensating hydraulic system assures diaphragm position and eliminates the need for troublesome vacuum breakers and refill valve.

The easy to read micrometer knob enables convenient capacity adjustment between 0-100% while the pump is operating or stopped. In addition to manual control, the pump can be supplied with optional automatic capacity control, making it possible for the pump to control the flow rate in proportion to various process signals. A simple, externally adjustable, internal hydraulic relief valve protects the pump and the process from pump induced overpressure situations.

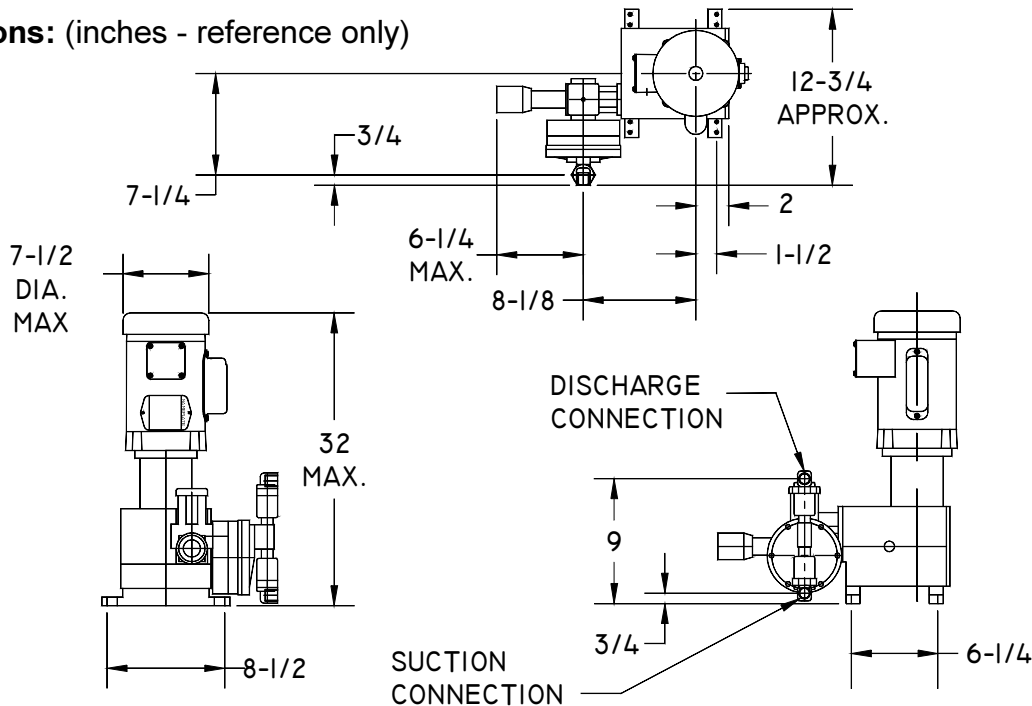
NIKKISO HYDROFLO[®]

Series 2000 Hydraulically Actuated Diaphragm

| Custom Features | Accessories |
|-------------------------------|--|
| Alternate Diaphragm Materials | NIKKISO HydroChek™ Calibration Columns |
| Automatic Capacity Control | NIKKISO HydroDamp® Pulsation Dampeners |
| Double Diaphragm Liquid Ends | NIKKISO HydroDrive™ Variable Speed Drives |
| Diaphragm Status Indication | NIKKISO HydroGarD® Back Pressure Valves |
| Liquid End Jacketing | NIKKISO HydroGarD® Safety Relief Valves |
| Low NPSHa Liquid Ends | NIKKISO HydroInjex™ Injection Assemblies |
| Remote Liquid Ends | NIKKISO HydroMix™ Agitators |
| Tubular Diaphragm Liquid Ends | NIKKISO HydroTank® Liquid Handling Package |

| Component | Materials of Construction | | | | |
|---------------------|---------------------------|----------|--------------|----------|----------|
| Pumphead | 316 SS | Alloy 20 | Hastelloy® C | PVC | PVDF |
| Check Valve Body | 316 SS | Alloy 20 | Hastelloy® C | PVC | PVDF |
| Check Valve Seat | 316 SS | Alloy 20 | Hastelloy® C | PVC | PVDF |
| Check Valve Element | 316 SS | Alloy 20 | Hastelloy® C | Ceramic | Ceramic |
| Diaphragm | PTFE | PTFE | PTFE | PTFE | PTFE |
| Contour Plate | 316 SS | Alloy 20 | Hastelloy® C | PVC | PVDF |
| O-Rings | FKM | FKM | FKM | FKM | FKM |
| Oil Reservoir Cap | 304 SS | 304 SS | 304 SS | 304 SS | 304 SS |
| Drive Housing | Aluminum | Aluminum | Aluminum | Aluminum | Aluminum |

Dimensions: (inches - reference only)



NIKKISO
Pumps America, Inc.

NIKKISO Pumps America, Inc.
6100 Easton Road • Plumsteadville, PA 18949
Phone (215) 766-7867 • Fax (215) 766-8290
email: sales@nikkisopumpsamerica.com
http://www.nikkisopumpsamerica.com

© 2002 NPA

Printed in U.S.A. 05/02

Bulletin 23200.20